

### Some of the general characteristics of the IP Audio/Conference system are:

- Connects (reuses) the same local data network
- The configuration of the zones is dynamic (through a graphical interface) and not through physical wiring.
- Zones can be configured for any number of speakers that can, in turn, overlap
- Allows connection with any data and audio device

### Características Generales de Software

#### Various audio sources:

- Streaming audio from the internet or other source on the network file(s) from an audio folder (audios are uploaded on the web administration page)
- Microphone input (you can have multiple microphones using USB adapters)
- Server line-in input
- Message recording, directly from the web administration page (compatible with all devices with a web browser)
- Recording messages from a telephone/extension
- Telephone communication (a distant speaker can be added to the conference by calling him on his landline or mobile phone)

#### Various audio destinations:

- SIP devices registered on the platform
- Audio playback zones (multicast groups)

#### Playback management:

##### Manual playback:

- Web interface to start/stop the audio source in each zone/speaker
- Start a message from a terminal registered on the server to the computer and play the audio of the message
- Start a message from a terminal registered on the server to the multicast group to play the audio of the message on all member devices of the speaker zone
- Make a call from/to a mobile phone to the server and play the audio on the computer or speaker area

##### Autoplay:

- Play audio based on events that occur in the system
- Execute audios based on HTTP commands from third-party systems
- Program in time zone (hour/day/month) which message/audio/source to play on a device or speaker area

### General hardware characteristics

- Intel Core I3 Haswell SOC Processor
- Intel HD Graphics 4400
- 2 x HDMI
- 4 x USB 3.0, 2 x USB 2.0, 1 x SATA 3
- 2 x Mini-PCIe, 1 x mSATA
- 2 x Realtek RTL8111E Gigabit LAN

### Processing System

**CPU:** Intel Core Haswell I3 SOC Processor  
Default 4005U Dual Core Processor, 1.7GHz, 3M Cache

**CPU TDP:** 15W

**Memory:** 1 x DDR3L SO-DIMM Socket (Up to 8G, 1333/1600MHz)

**Graphics:** Intel® HD Graphics 4400

**LAN Chipset:** 2 x Realtek RTL8111E Gigabit LAN

**Audio:** Realtek ALC662 HD Audio

### Power interface

**Power Adapter:** 12 V - 3 A

**DC Jack:** 5.5mm, 2,5 mm

### Environmental Characteristics

**Operating Temp:** 0°C~50°C

**Non-Operating Temp:** -20°C~80°C

**Humidity:** 10%~90%

### Physical Characteristics

**Material:** Aluminum

**Dimensions:** 155 x 127 x 48mm

**Weight:** 1kg

**Mounting:** VESA type anchor

**Cooling:** Forced ventilation free design



# IP Paging System

Local and Cloud



**Discover our comprehensive IP Paging system, designed to simplify the remote broadcast of messages. It can operate on both a local network and in the cloud.**



**Operating the speakers is straightforward with our system, and you can easily integrate your company's software by sending HTTP commands.**



**Issue alerts triggered by sensors, events, or processes managed by your software by sending commands that our speakers will interpret.**



**ARGENTINA**  
Tel: +54 11 5272 9500 · Chile 111 esq. Méjico  
Vicente López · Buenos Aires · B1603CMC

**ISRAEL**  
Tel: +972 538 262 492

**MÉXICO**  
Tel: +52 477 239 5261

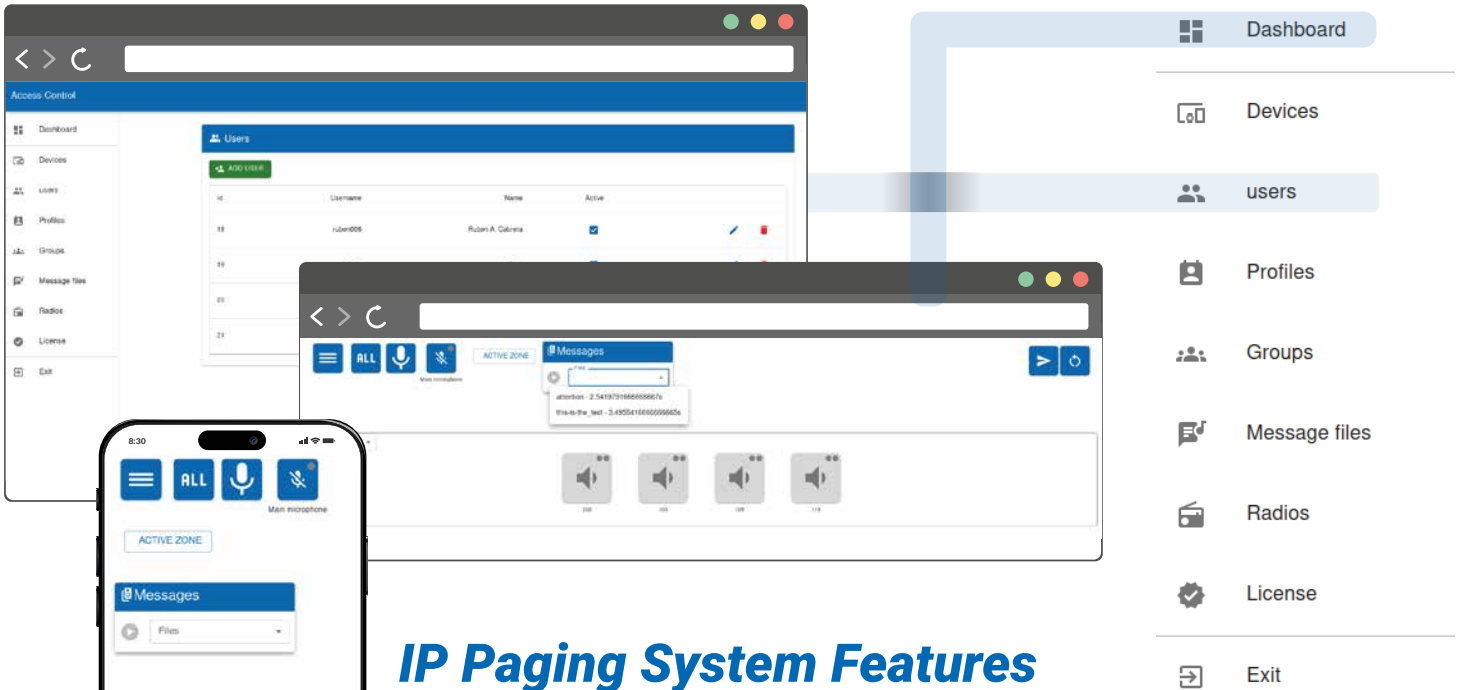
**URUGUAY**  
Tel: +598 99 200 210



<https://surix.net>



*Our multi-user system allows you to configure different profiles and access zones. You can broadcast live voice, music, and pre-recorded messages, as well as select individual speakers or speaker groups with real-time remote sound monitoring.*



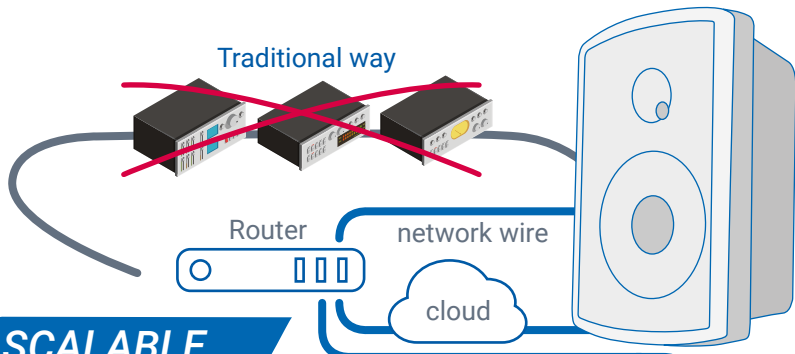
## IP Paging System Features

*Whether from the cloud or from a local Wi-Fi network, you can now send messages from a smartphone, this is ideal for staff who make rounds of the facilities, requesting people and/or staff in a certain area, issuing early alerts, or calling attention to plant personnel before an event.*

- **Integrate your software and automate messages using HTTP commands**
- **Local and/or cloud server**
- **Issue Alert notices for sensors, events, or processes managed by your software.**
- **Broadcast Voice, Music, Pre-recorded Messages**
- **Broadcast from:**
  - **IP console**
  - **Tablet / Cellphone**
  - **PC/Mac**
  - **API Events**
  - **Events time**
- **Multi user**
- **Allows you to discriminate privileges and voice zones**
- **Speaker selection individually or in groups in real time.**
- **Sound emission status indicator.**
- **Verify that the message arrived in real time.**
- **IP Speaker Line**
- **Support high definition speakers.**

*Search for people private monitoring prevention and emergencies public paging, commercial paging and Industry paging.*

## Paging system designed to facilitate the implementation of audio message emission.

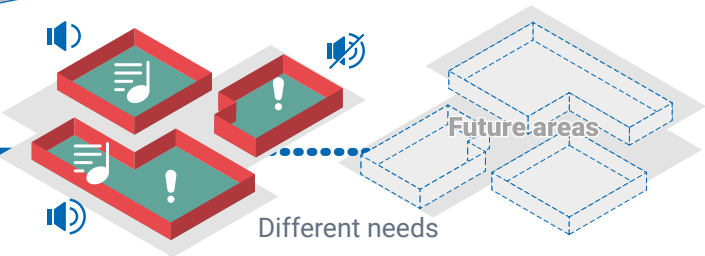


### ALL IN ONE

With a single data network you can integrate everything you need, such as a paging network or a functional music system widely used in shopping centers.

### SCALABLE

It is an easy and cost-effective solution to scale. Whether you want to expand areas or size of your network in a multi-user IP paging ecosystem. The system runs locally or in the cloud.

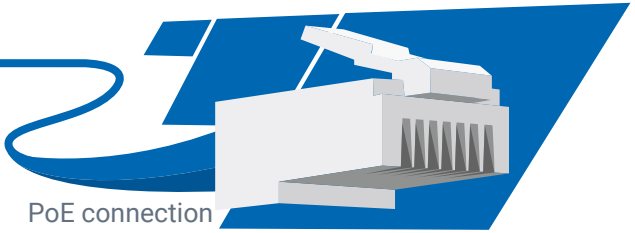


### FLEXIBLE

Play and schedule different content in different zones and easily change both zones and content at any time.

### EASY TO INSTALL

You only need a standard network for connectivity, power and communication, you can run the software on a local server, locally connected to remote areas through the internet or running the entire system from the cloud.



### EASY INTEGRATION

Connect your audio system to other systems and devices, such as your access control system and cameras. Automate messages using HTTP commands from your current software via API

### INTELLIGENT SYSTEM

Use HD audio players integrated into your server, attached applications or players, scheduled or event-driven announcements and/or HTTP commands, audio detection, health monitoring, etc. The system through API can be integrated into your company's software.

